



PROVIDENCE CHRISTIAN ACADEMY

UNIFORM GUIDE

Uniform Policy	1
Pre-K-8th Grade Girls <i>Daily Dress</i> ...	2
Pre-K-3rd Grade Girls <i>Chapel Dress</i> ..	3
4th-8th Grade Girls <i>Chapel Dress</i> ...	4
Pre-K-8th Grade Boys <i>Daily Dress</i> ...	5
Pre-K-8th Grade Boys <i>Chapel Dress</i> ..	6
High School Girls <i>Daily Dress</i>	7
High School Girls <i>Chapel Dress</i>	8
High School Boys	9
Ordering Information	10

UNIFORM POLICY

PCA is a workplace for students as well as for teachers. Students should dress in a way to demonstrate their respect for the school. Therefore, students shall dress neatly by wearing all shirts tucked in, shoes tied, no holes or tears in clothing and properly sized clothing. Cleanliness is required. Modesty is necessary as well, and, in particular, no tightly fitting clothing or clingy-type fabrics will be allowed. Judgment of immodest clothing is an administrative decision. Outlandish or distracting clothing or appearance will not be allowed.

Parents should understand that daily compliance with the uniform policy is integral to the positive learning atmosphere of the school. Continual questioning of the purposes and rules creates an attitude of rebellion, which is counterproductive. We encourage parents to ensure their child's compliance. Regardless of the child's grade level, compliance of the PCA Uniform Policy is mandatory.

Please make selections from the following suppliers:

See page 10 for further information.

Land's End (PCA plaid NOT available)
Buckhead Uniforms
Educational Outfitters

Be sure to tell the companies that you are with Providence Christian Academy. They will ensure you purchase items only approved by our administration.

Selections from other suppliers are subject to approval by PCA Administration.

ORDERING INFORMATION

Be sure to tell the companies that you are with Providence Christian Academy. They will ensure you purchase items only approved by our administration.

BUCKHEAD UNIFORMS

Phone 800.779.3676 toll free

www.buckheaduniforms.com

(Our plaid is #41. The jumper style is #172 and the skirt style is #134)

EDUCATIONAL OUTFITTERS

PHONE 615.373.0433

1731 MALLORY LANE BRENTWOOD, TN 37127

SCHOOL CODE: TN01002

LAND'S END

Phone 800.469.2222 toll free

www.landsend/school.com

School ID# - 9000-5634-2

EMBROIDME

Phone 895.1182

1768 W. Northfield Blvd.

Murfreesboro, TN 37129

If you purchased a polo shirt and need it to be monogrammed please contact EmbroidMe and they will monogram shirts to meet our school requirements.

Physical Education Uniforms are required for grades 4-8.
PCA physical education uniforms are available only through Land's End.

If you have questions, please call the PCA office at 904.0902

HIGH SCHOOL BOYS - CHAPEL DRESS

- Pants** Khaki or navy (plain or pleated). No drawstrings or “cargo” style.
- Shirts** Button down oxford cloth shirts in white, light blue, yellow, or blue/white stripe.
- Blazer** Navy blazer embroidered with crest required for chapel.
- Tie** Solid navy, red, or school plaid. Blue/gold stripe from Lands End.
- Belt** Solid black, brown, or cordovan. Belts must be worn when there are belt loops.
- Socks** Navy, black, or brown.
- Shoes** Casual dress shoes in brown, black, or cordovan. No athletic shoes or Crocs may be worn on chapel day.



DAILY DRESS

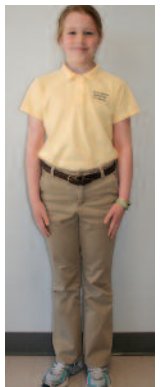
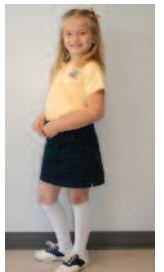
- Pants** Khaki or navy (plain or pleated) chinos or cords. No drawstrings or “cargo” style.
- Shirts** Button down oxford cloth shirts in white, light blue, yellow, or blue/white stripe. Turtleneck shirts in white, navy, or yellow. Woven or knit polos with logo in solid white, red, yellow, light blue or navy.
- Sweatshirts** Embroidered PROVIDENCE sweatshirts available in the school office. No other sweatshirts may be worn during school hours. 6th-12th grade boys may wear a navy fleece vest, fleece jacket or fleece half-zip pullover, monogrammed with the school crest and available through Land’s End.
- Socks** Navy, black, brown or white.
- Shoes** Any shoes (except flip-flops) may be worn. Shoes may only have a maximum of 3 colors and no neon. Boots may be worn. **Dress shoes must be worn on chapel days.**
- Belt** Solid black, brown, or cordovan. Belts must be worn when there are belt loops.



Male students are not permitted to wear earrings during school hours or while participating in school-related activities. Any other jewelry worn by male students such as necklaces, watches or bracelets must follow the guidelines for jewelry as stated on page 4.

KINDERGARTEN - 8TH GRADE GIRLS - DAILY DRESS

- Shorts or Pants** Plain or pleated in navy or true khaki - **not light khaki**. No drawstrings and shorts must be a longer length. No “cargo” style pants or shorts (pockets only at waist).
- Skirts, Skorts, or Jumper** School plaid, navy or true khaki - **not light khaki**.
- Capri Pants** True khaki - **not light khaki** or navy.
- Turtleneck Shirts** Solid white, red, light blue, light yellow, or navy.
- Polo Style Shirts** Short or long sleeves (solid white, red, light blue, yellow or navy). Shirts must be embroidered in navy (or white on navy) with approved PCA logo. 6th-8th grade girls may wear embroidered gray (heather)
- Cardigan Sweaters, Pullover Sweaters, or V-Neck Pullover Vests** Solid white, red, yellow or navy. No stripes on sweaters or vests. Any sweater or vest that is worn during school hours must follow this code. No zipper sweaters.
- Sweatshirts** Embroidered PROVIDENCE sweatshirts, approved for uniform wear are available for purchase in the school office. No other sweatshirts may be worn during school hours. Uniform approved sweatshirts may be monogrammed with the students name in white, navy, red, light yellow, or light blue. Students may replace the hood drawstring with a ribbon in one of the following solid colors: white, navy, red, yellow or light blue. 6th-12th grade girls may wear a navy fleece vest, fleece jacket or fleece half-zip pullover, monogrammed with the school crest and available through Land’s End.
- Belts** Solid black, navy, brown, cordovan, or khaki. A belt must be worn when there are belt loops on the clothing.
- Socks, Tights & Leggings** Solid white, red, navy or khaki socks and tights. Socks, tights or leggings must be worn with shoes. Navy leggings may be worn.
- Shoes** Crocs - navy, black, tan or brown. Casual dress shoes must be brown, black, cordovan, or navy. No open toe shoes, sandals, clogs, or boots. Athletic shoes and all shoe laces must be primarily white, black, navy blue, or a subdued neutral color. - logos and brand names should be minimal.



No hats, caps or bandannas are to be worn. No sweatshirt jackets. Nail Polish, Jewelry and Make-Up guidelines on p. 4.

KINDERGARTEN - 3RD GRADE GIRLS - CHAPEL DRESS

V-Neck Jumper

School plaid available through Buckhead Uniforms or Educational Outfitters.

Blouses

Peter Pan Blouses, Button Down Oxford Cloth Blouse, or Princess Cut Blouses in solid white, light blue, light yellow with no crests (no silky fabrics).

Turtleneck Shirts

Solid white, red, light blue, light yellow, or navy. Turtlenecks may be worn during colder weather.

Socks, Tights & Leggings

Solid white, red, navy, or khaki. Socks or tights must be worn with shoes. Navy leggings may be worn.

Shoes

Casual dress shoes must be brown, black, cordovan, or navy. No open toe shoes, sandals, clogs, boots, or crocs. *No tennis shoes or Crocs may be worn on chapel day.*

Chapel dress may be worn on other days also.



HIGH SCHOOL GIRLS - CHAPEL DRESS

Skirt

Khaki or navy (plain or pleated). Lands' End pleated skirt or Solid A-line skirt

Shirt

Light blue or white peter pan or oxford
Short, long or 3/4 length sleeve

Blazer

Navy blazer embroidered with crest required for chapel.

Sweaters

Fine gauge crew and cardigan sweaters, pullover sweaters, or V-neck pullover vest in solid white, red or navy

Shoes

Casual dress shoes in brown, black, cordovan.
No open-toed shoes, sandals, clogs or boots
No tennis shoes or Crocs may be worn on chapel day.



HIGH SCHOOL GIRLS - *DAILY DRESS*

Pants

Khaki or navy plain front chinos, pleated chinos, elastic waist chinos, stretch cropped chinos, pleated chino shorts, stretch cords, stretch flare chinos. NO "cargo" pants or big side pockets.

Skirt & Skorts

Pleated, A-line, 5-pocket stretch cord skirt, stretch chino skirt, pleated cargo, chino skort, cord skort, or 2 button chino skort.

Shirt

Turtleneck shirts in solid red, light blue, light yellow or navy Oxford shirt in light blue or white. Woven or knit polos with logo in solid white, red, yellow, light blue or navy. Woven or knit peter pan blouse in white, blue or yellow

Sweatshirts

Embroidered PROVIDENCE sweatshirts, approved for uniform wear are available for purchase in the school office. No other sweatshirts may be worn during school hours. Uniform approved sweatshirts may be monogrammed with the students name in white, navy, red, light yellow, or light blue. Students may replace the hood drawstring with a ribbon in one of the following solid colors: white, navy, red, yellow or light blue. 6th-12th grade girls may wear a navy fleece vest, fleece jacket or fleece half-zip pullover, monogrammed with the school crest and available through Land's End.

Sweaters

Fine gauge crew and cardigan sweaters, pullover sweaters, or V-neck pullover vest in solid white, red, yellow or navy.

Socks, Tights & Leggings

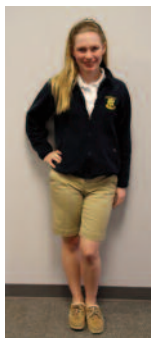
Solid white, red, navy or khaki socks and tights. Socks, tights or leggings must be worn with shoes. Navy leggings may be worn.

Shoes

Any shoes (except flip-flops) may be worn. Shoes may only have a maximum of 3 colors and no neon. Boots may be worn. **Dress shoes must be worn on chapel days.**

Belts

Solid black, navy, brown, cordovan, or khaki
A belt must be worn when there are belt loops on the clothing.



4TH - 8TH GRADE GIRLS - *CHAPEL DRESS*

Skirt

School plaid available through Buckhead Uniforms or Educational Outfitters.

Blouses

Peter Pan Blouses, Button Down Oxford Cloth Blouse, or Princess Cut Blouses in solid white, light blue, light yellow with no crests (no silky fabrics).

Turtleneck Shirts

Solid white, red, light blue, light yellow, or navy. Turtlenecks may be worn during colder weather.

Socks, Tights & Leggings

Solid white, red, navy, or khaki. Socks or tights must be worn with shoes. Navy leggings may be worn.

Shoes

Casual dress shoes must be brown, black, cordovan, or navy. No open toe shoes, sandals, clogs, boots, or crocs.
No tennis shoes or Crocs may be worn on chapel day.

Hair, Nail Polish, Jewelry and Make-Up

The maximum size for girls' earrings is 1" in diameter. Jewelry for girls should be considered an accessory to the student's appearance. Jewelry in colors that clash or do not match with the uniform may not be worn. Hair accessories for girls should be white, navy, red, yellow, light blue or neutral in color. Hair accessories made from PCA's school plaid are also acceptable. Not permitted: unnaturally dyed hair colors, and no body piercing.



Physical Education uniforms are required for grades 4-8 and may be purchased in the school office.

KINDERGARTEN - 8TH GRADE BOYS - *DAILY DRESS*

Shorts or Pants

Plain or pleated in navy or true khaki - **not light khaki**.
No drawstrings and shorts must be a longer length.
No "cargo" style pants or shorts (pockets only at waist).

Polo Style Shirts

Short or long sleeves (solid white, red, light blue, yellow or navy). Shirts must be embroidered in navy (or white on navy) with approved PCA logo. 6th-8th grade boys may wear embroidered gray (heather) polos.

Turtleneck Shirts

Solid white, red, light blue, light yellow, or navy.

Button Down Oxford Cloth Shirts

White, light blue, or light yellow.

Cardigan Sweaters, Pullover Sweaters, or V-Neck Pullover Vests

Solid White, red, yellow or navy. No stripes on sweaters or vests. Any sweater or vest that is worn during school hours must follow this code. No zipper sweaters.

Sweatshirts

Embroidered PROVIDENCE sweatshirts, approved for uniform wear are available for purchase in the school office. No other sweatshirts may be worn during school hours. Uniform approved sweatshirts may be monogrammed with the students name in white, navy, red, light yellow, or light blue. 6th-12th grade boys may wear a navy fleece vest, fleece jacket or fleece half-zip pullover, monogrammed with the school crest and available through Land's End.

Belts

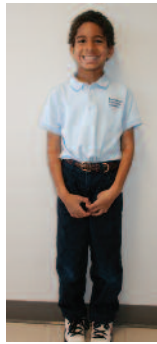
Solid black, navy, brown, cordovan, or khaki. A belt must be worn when there are belt loops on the clothing.

Socks

Solid white, navy, black, or khaki. Socks must be worn with shoes.

Shoes

Crocs - navy, black, tan or brown
Casual dress shoes must be brown, black, cordovan, or navy. No open toe shoes, sandals, clogs, or boots. Athletic shoes and all shoe laces must be primarily white, black, navy blue, or a subdued neutral color. - logos and brand names should be minimal.



KINDERGARTEN - 8TH GRADE BOYS - *CHAPEL DRESS*

Shorts or Pants

Plain or pleated in navy or true khaki - **not light khaki**.
No drawstrings and shorts must be a longer length.
No "cargo" style pants or shorts (pockets only at waist).

Button Down Oxford Cloth Shirts

White, light blue, or light yellow.

Tie

Solid Navy, solid red, or school plaid available through Buckhead Uniforms or Hall Closet Uniforms. 6th-8th graders may also wear the blue and gold striped tie from Land's End.

Cardigan Sweaters, Pullover Sweaters, or V-Neck Pullover Vests

Solid white, red, or navy. No stripes on sweaters or vests. Any sweater or vest that is worn during school hours must follow this code. No zipper sweaters.

Belts

Solid black, navy, brown, cordovan, or khaki. A belt must be worn when there are belt loops on the clothing.

Socks

Solid white, navy, black, or khaki. Socks must be worn with shoes.

Shoes

Casual dress shoes must be brown, black, cordovan, or navy.
No open toe shoes, sandals, clogs, boots, or crocs.
No tennis shoes may be worn on chapel day.

Chapel Dress may be worn on other days also.

Physical Education uniforms are required for grades 4-8 and are available at Land's End.

Male students are not permitted to wear earrings during school hours or while participating in school-related activities. Any other jewelry worn by male students such as necklaces, watches or bracelets must follow the guidelines for jewelry as stated on page 4.

